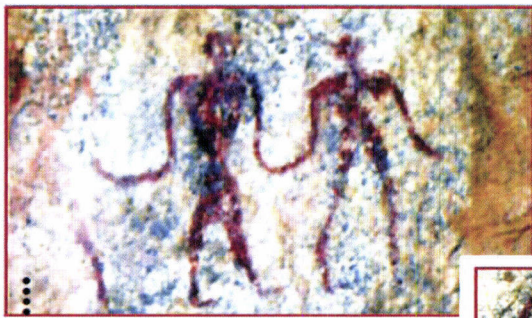
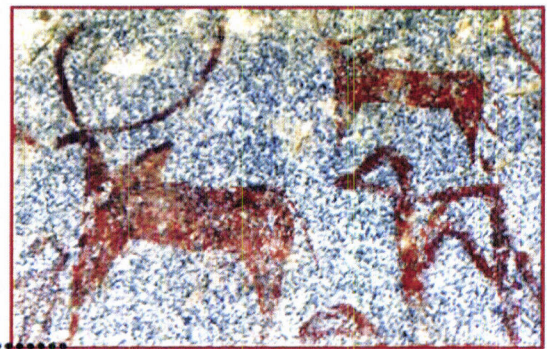


Pre-historic paintings, Hire Benakal, Gangavati taluk



Pre-historic paintings  
Ramapur, Gangavati taluk





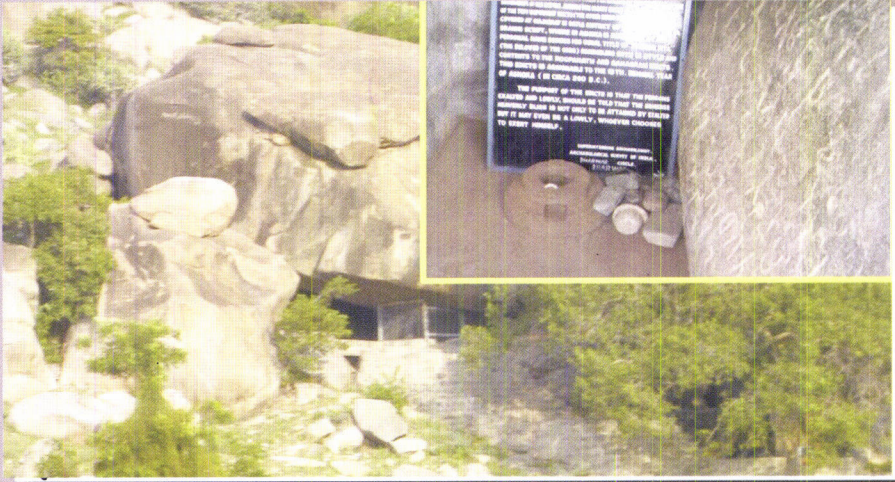


● Megalithic Passage Tombs, Benakal, Gangavati taluk

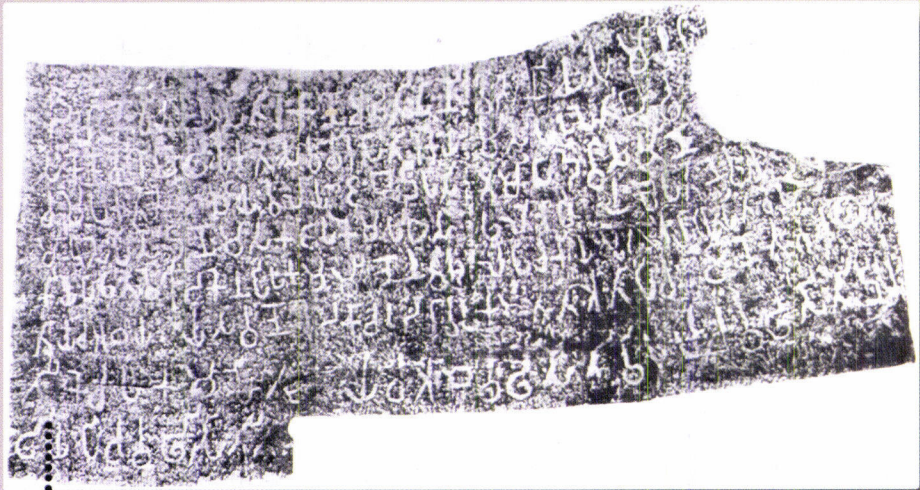




P  
R  
O  
V  
I  
N  
C  
I  
A  
L  
  
S  
E  
R  
I  
E  
S



Ashoka's inscription(Inset), Maski, Raichur Dist.



Ashoka's inscription at Gavimath, Koppal Dist.







● A side view of the Mudgal Fort, Raichur Dist .



● A side view of the Fort, Devdurga Fort, Raichur Dist .





● A View of Raichur Fort, Raichur



● Another view of the Fort, Raichur





# RAICHUR

P  
R  
O  
V  
I  
N  
C  
I  
A  
L  
  
S  
E  
R  
I  
E  
S



Shams Alam Hussaini Darga



Canon at the Fort,  
Raichur

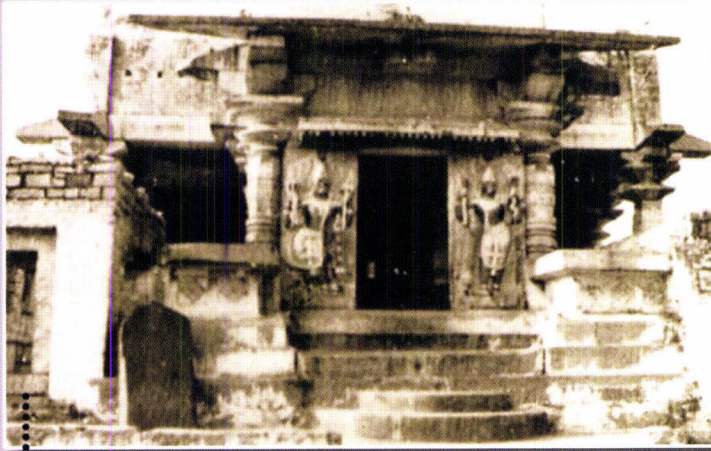


A view of hilltop, Raichur

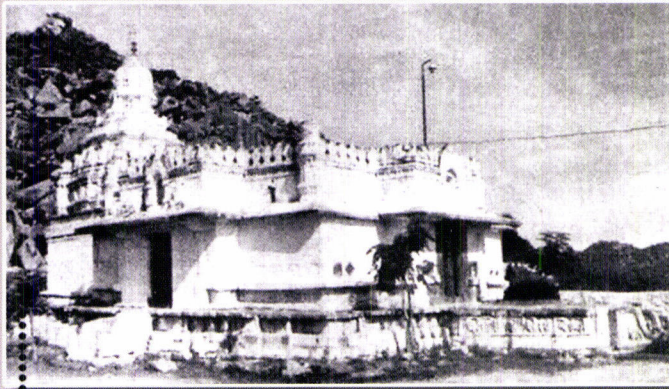


# RAICHUR

P  
R  
O  
V  
I  
N  
C  
I  
A  
L  
  
S  
E  
R  
I  
E  
S



● Front View of a Chalukyan Temple, Gabbur, Raichur Dist .



● Maruteshwara Temple, Kallur, Raichur Dist.



● A Chalukyan Temple, Kavithal, Raichur Dist .





RAICHUR

P  
R  
O  
V  
I  
N  
C  
I  
A  
L  
  
S  
E  
R  
I  
E  
S



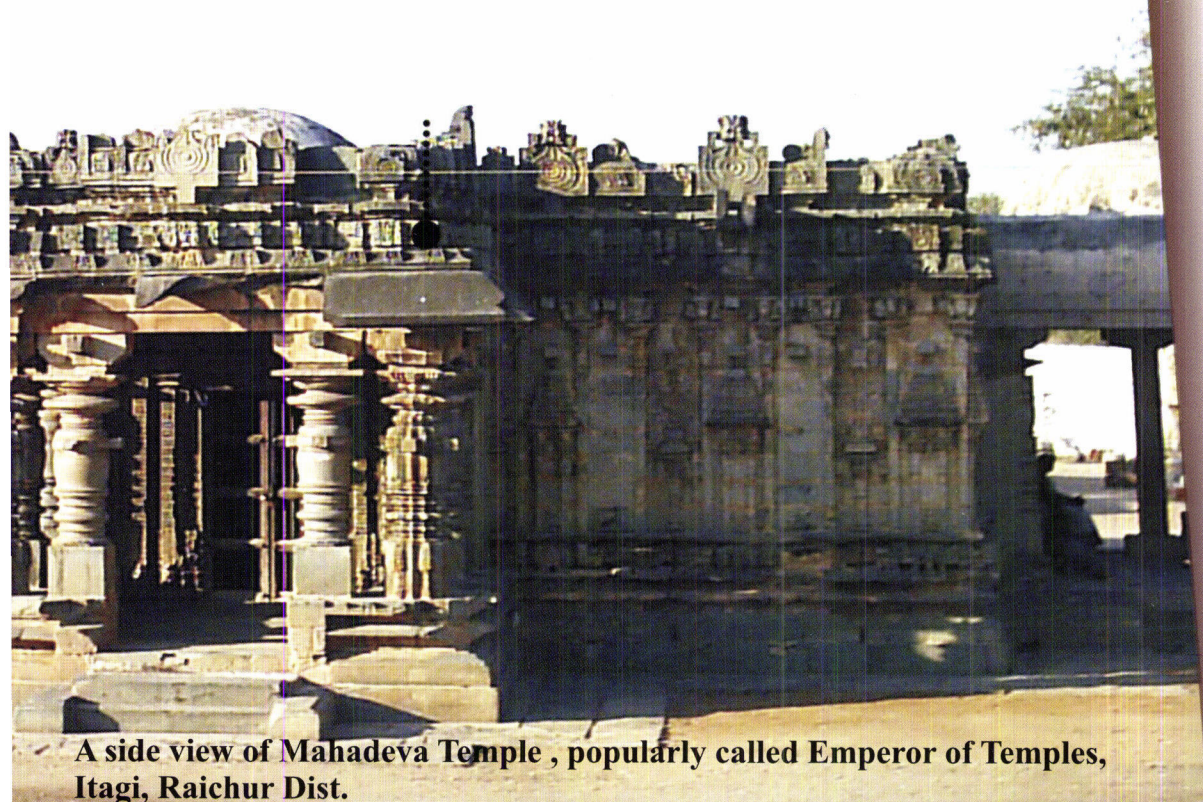


# RAICHUR

P  
R  
O  
V  
I  
N  
C  
I  
A  
L  
  
S  
E  
R  
I  
E  
S



● Relief Sculptures from Mahadeva Temple, Itagi, Raichur Dist .



**A side view of Mahadeva Temple , popularly called Emperor of Temples, Itagi, Raichur Dist.**





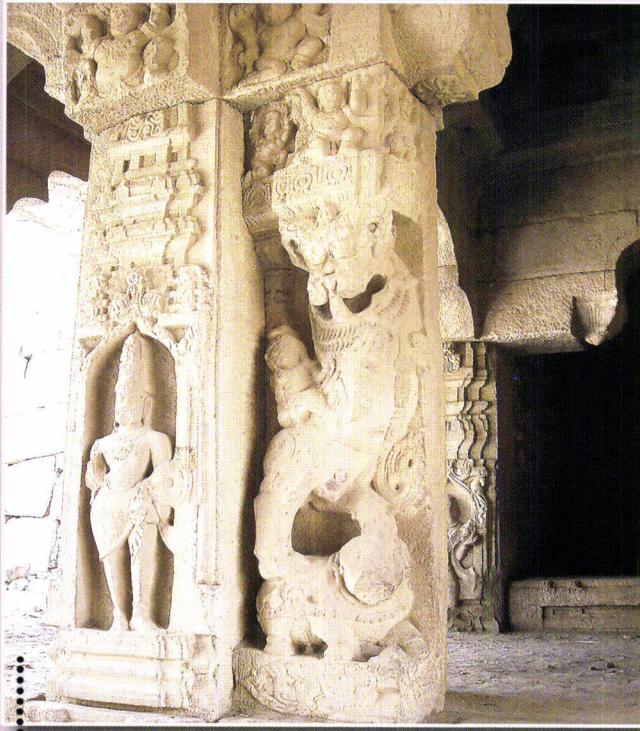
# RAICHUR



P  
R  
O  
V  
I  
N  
C  
I  
A  
L  
  
S  
E  
R  
I  
E  
S

Relief Sculptures from Mahadeva Temple, Itagi, Raichur Dist .





● A Relief Sculpture on a Pillar, Mahadeva Temple, Itagi



● A Front View of the Navalingshwara Temple, Kukanur, Koppal Dist.





# RAICHUR



A Rear View of the Navalingeshwara Temple, Kukanur, Koppal Dist.



Another view of the Temple, Kukanur, Koppal Dist.

P  
R  
O  
V  
I  
N  
C  
I  
A  
L  
  
S  
E  
R  
I  
E  
S



# RAICHUR

P  
R  
O  
V  
I  
N  
C  
I  
A  
L  
  
S  
E  
R  
I  
E  
S



A rear view of the Trayambakeshwara Temple, Kavital



Kaleshwara Temple, Kukanur, Koppal Dist.



Nava Brindavana, Anegondi





# RAICHUR

P  
R  
O  
V  
I  
N  
C  
I  
A  
L  
  
S  
E  
R  
I  
E  
S



● Uchappayyana Matha, Anegondi



● A View of the Fort, Anegondi





# RAICHUR



A stone panel showing a king's victorious procession, Kanakagiri



A Decorative Stone Well below the ground level, Kanakagiri



# RAICHUR



Profusely carved window,  
Khajanagowder Wade, Raichur



A beautiful mural painting,  
Khajanagowder Wade, Raichur



A wooden painting called  
Kinnal Art, near Koppal



A wooden Image, Kinnal Art Raichur

P  
R  
O  
V  
I  
N  
C  
I  
A  
L  
  
S  
E  
R  
I  
E  
S



'We are of opinion', wrote the Court of Directors in 1807 to their servants in Bengal. 'that a Statistical Survey of the country would be attended with much utility; we, therefore, recommend proper steps to be taken for the execution of the same. The despatch from which these words are quoted forms one of a long series of instructions in which the East India Company urged a systematic inquiry into its territories. The first formulated effort in Bengal dates from 1769, four years after that Province came into its hands; the latest orders of the Court of Directors on the subject were issued in 1855, three years before the administration of India passed from the Company to the Crown. During the interval many able and earnest men had laboured at the work, manuscript materials of great value had been amassed and several important volumes had been published. But such attempts were isolated, directed by no central organization, and unsustained by any continuous plan of execution.

